

SE470LC

SHANTUI
VALUE THAT WORKS

EXCAVATOR
SERIES

Engine Model	Cummins QSM11
Gross Power	250 kW/2000 rpm
Operating Weight	46800 kg

LET'S MAKE
CONSTRUCTION EASIER



SHANTUI CONSTRUCTION MACHINERY CO., LTD.

ADDRESS: No. 58, G327 Highway Jinan City, Shandong, CHINA

TEL: +86-537-2909369 FAX: +86-537-2311219

EMAIL: trade@shantui.com WEB: www.shantui.com



www.shantui.com

SE470LC TECHNICAL PARAMETERS EXCAVATOR SERIES

SHANTUI
VALUE THAT WORKS

ENGINE

Model	Cummins QSM11
Type	High pressure common rail, turbocharged
No. of cylinder	6
Emission Regulation	Tier 3 / Stage III
Displacement	10.8L
Power output	250kW/2000rpm

HYDRAULIC SYSTEM

Type	Double piston pump plus gear pump
Max. discharge flow	2x360L/min

DIGGING FORCE (ISO6015)

Bucket digging force	288.5kN
Arm digging force	242kN

BUCKET

Type	Backhoe bucket
Bucket capacity	2.2~3.2(2.2)m ³
Bucket width	1710mm

TRAVEL SYSTEM

Type	Axial variable plunger motor
Support roller quantities	9X2
Carrier roller quantities	2X2
Travel shoes	49X2
Travel speed	3.3/5.6km/h
Drawbar pulling force	364N.m
Grade ability	70% (35°)

SWING SYSTEM

Swing motor type	Swash plate plunger motor
Swing speed	0-10r/min
Brake type	Pressure release, mechanical braking

REFILLING CAPACITIES & LUBRICATIONS

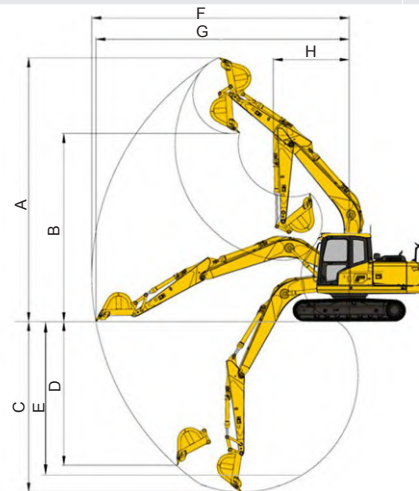
Fuel tank	620L
Cooling system	34L
Engine oil	35L
Hydraulic oil tank	366L
System Capacity	460L

OPERATING WEIGHT AND GROUND PRESSURE

Shoe width	600mm
Ground pressure	81.9kPa
Operating weight	46800kg

SCOPE OF WORK (mm) (Boom: 7060 mm Arm: 3380 mm)

A	Max. digging height	10785
B	Max. dumping height	7600
C	Max. digging depth	7815
D	Max. vertical digging depth	6295
E	Max. Depth cut for 2500mm Level Bottom	7665
F	Max. digging distance	12040
G	Max. digging radius at ground level	11830
H	Min. swing radius of work equipment	4840



DIMENSIONS (mm)

A	Overall length	12110
B	Ground contact length (Transportation)	6660
C	Overall height(to top of boom)	3745
D	Overall width	3360
E	Overall height(to top of cab)	3330
F	Counter weight ground clearance	1395
G	Ground clearance	590
H	Tail swing radius	3720
I	Tread	4290
J	Track length	5315
K	Track gauge	2760
L	Track width	3360
M	Shoe width	600
O	Bonnet height	2965
P	Revolving frame width	3190
Q	Distance from swivel center to tail	3675

